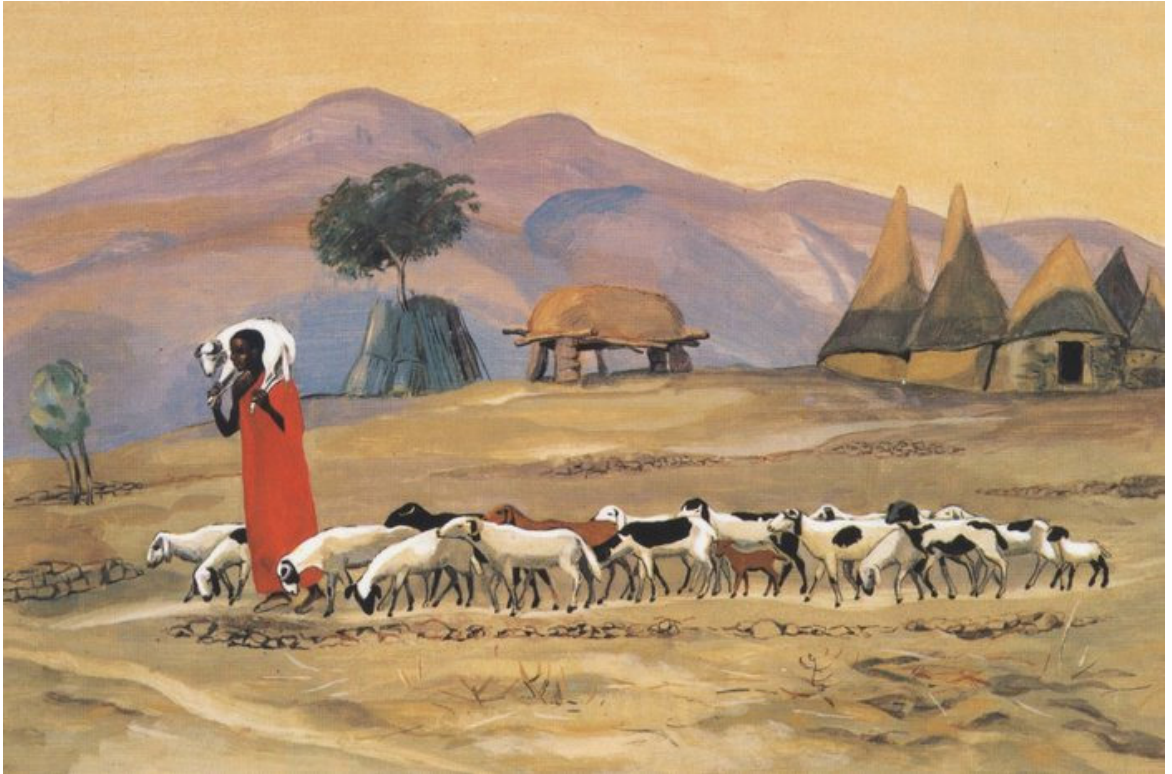




FIRST
PRESBYTERIAN
Ann Arbor | Michigan

**FOURTH SUNDAY OF EASTER
APRIL 30, 2023 | 8:00 A.M. WORSHIP**

1432 Washtenaw Avenue
Ann Arbor, Michigan
firstpresbyterian.org



"The Good Shepherd" by Jesus Mafa

FOURTH SUNDAY *of* EASTER

April 30, 2023 • 8:00 a.m.

Please join in reading and singing those parts of the service printed in **bold**.

* When this symbol precedes an element of the service, please rise in body or spirit.

GATHERING

OPENING VOLUNTARY

Etude de Concert, A-flat

Franz Liszt

POURING OF THE WATER

WELCOME AND LIFE IN THE CHURCH

* CALL TO WORSHIP

Holy One, You have many names
and today we call forth the names we need:

Imaginative Spirit

Unfolding Possibility

Emerging Life

Playful Wisdom

Liberative Trouble Maker

Wild and Compassionate God—

Surprise us with signs and wonders in a growing world.

Swell with us, as we make waves towards collective freedom.

* HYMN 39

Great is Thy Faithfulness

FAITHFULNESS

CALL TO CONFESSION

PRAYER OF CONFESSION

Gracious God, you give us new life, but we choose the ways of death. You breathe peace upon us, yet we pursue conflict. You seek us out when we are afraid, yet we cling to our fears. Forgive us for turning away from you. Shine your light upon us and banish all shadows, that we may live faithfully and joyfully for you...

SILENT PRAYER

KYRIE

DAY OF REST



Lord, have mer - cy, Christ, have mer - cy, Lord, have mer - cy up - on us.



Lord, have mer - cy, Christ, have mer - cy, Lord, have mer - cy up - on us.

ASSURANCE OF FORGIVENESS

* PASSING OF THE PEACE

*You are invited to share signs with one another of the peace we experience as God's people.
Greet one another saying, "The peace of Christ be with you," and respond, "And also with you."*

* CONGREGATIONAL RESPONSE

CELTIC ALLELUIA



Al - le - lu - ia, al - le - lu - ia,



Al - le - lu - ia, al - le - lu - ia!

PROCLAIMING *the* WORD

PRAYER FOR ILLUMINATION

FIRST SCRIPTURE READING

John 10:1-10

This is the Word of the Lord.

Thanks be to God.

SECOND SCRIPTURE READING

Acts 2:42-47

The grass withers, the flower fades;

The word of the Lord endures forever.

SERMON

RESPONDING *and* SEALING

OFFERING OF TITHES AND GIFTS

Offertory

Etude de Concert, D-flat

Franz Liszt

* Doxology

LASST UNS ERFREUEN

Praise God, from whom all blessings flow.

Praise God, all creatures here below. Alleluia, alleluia!

Praise God above ye heavenly host.

Creator, Christ, and Holy Ghost. Alleluia, alleluia!

Alleluia, alleluia, alleluia!

* Prayer of Dedication

SACRAMENT OF HOLY COMMUNION

Please refer to the Communion Card.

THE LORD'S PRAYER

SENDING

* HYMN 526

Let Us Talents and Tongues Employ

LINSTEAD

* CHARGE AND BENEDICTION

Please be seated for the Closing Voluntary.

CLOSING VOLUNTARY

Etude de Concert, Waldesrauchen

Franz Liszt



Music copyrights: All music is reprinted under OneLicense.net A-720542 and under CCLI license #20971309. All rights reserved.

Cover art: "The Good Shepherd" by Jesus Mafa

WE ARE GLAD YOU ARE HERE!

WELCOME TO FIRST PRES

We are so thankful that you have joined us today for Worship. If you are looking for a church to grow in your faith, you are welcome here at First Pres! We invite you to join us at our FAST TRACK event today at 11:00 a.m. For more info, contact Rev. Melissa Anne Rogers at mrogers@firstpresbyterian.org. We look forward to personally meeting you. **PLEASE LET US KNOW YOU WERE HERE** by signing the Friendship Pad, then passing it down to others.

PRAYER

If you would like someone to pray with you, pastors will be available at the Communion Table after the service.

WORSHIP LEADERS

Preacher	Rev. Megan Berry	Pianist	Josh Marzan
Liturgist	Rev. David Prentice-Hyers	Communion	Brian Schneidewind
Lector	Carol Gottliebsen		Nancy Fox

WAYS TO GIVE

Your gift allows us to carry out our mission as an inclusive and diverse faith community.

Cash/Check

Place in the offering plate or in the mail.

Online

<https://bit.ly/FPCvanco>

Text-to-Give

Text the amount you would like to give to
855-904-1523.

Vanco Mobile App



TODAY AT FIRST PRES

- 8:00 a.m. Worship (Monteith Hall)
 - 8:15 a.m. Orchestra Rehearsal (Sanctuary)
 - 9:30 a.m. Worship (Sanctuary)
 - 10:30 a.m. Fellowship (Social Hall)
 - 10:45 a.m. Children's Choir (Lemon Chapel)
 - 11:00 a.m. Fast Track to Membership (Zoom 3, Pastor's Study)
 - 11:00 a.m. Faith Formation: Youth (Lower Level)
 - 11:00 a.m. Exploring the Faith (Monteith Hall)
 - 11:00 a.m. First Friends (Lewis Room)
 - 11:00 a.m. The Bible at 11 o'clock (French Room, Zoom 4)
 - 11:15 a.m. Faith Formation: Children (Levels 1 & 3)
 - 5:00 p.m. Dismantling Racism: What Is God Calling Use to Do? (Social Hall)
 - 7:00 p.m. T2A2 Young Adult Bible Study (Zoom 4)
- Contact: Rev. Hannah Lundberg, hlundberg@firstpresbyterian.org

NEWS & EVENTS

CHILDREN & FAMILIES

Enroll Your Child at Triangle Preschool!

Triangle Cooperative Preschool (located in Rooms 100 and 101 of our church building) is now accepting applications for 3- and 4-year-olds for the 2023-2024 school year. First Presbyterian members receive priority enrollment status for applications submitted prior to June 1, 2023. There will be an Open House on Tuesday, May 2, from 10:00 a.m. to noon, for prospective families to tour the school, meet the teachers and Triangle families, and have questions answered. For an application, visit www.trianglecoop.org or email info@trianglecoop.org.

Music and Fine Arts Summer Camp

July 31 - August 4 | 9:30 a.m. - 2:30 p.m.

We invite all rising 2nd through rising 9th graders to join us for a week of non-stop fun and learning. Our campers will have the opportunity to learn the upbeat and lively children's musical, "Oh, Jonah!" Along with that, we have a lot of other activities planned, such as handbells, crafts, games, Bible stories, and much more. The cost is only \$25 per camper. Register online at firstpresbyterian.org.

CONGREGATIONAL CARE

Caring with Cards

Cards of support, prayers, grief support, welcome, and celebrations are sent by a group of our church members to those identified by our pastoral staff. If you would like to join this group in sending cards via the postal service, contact Rev. Rogers at mrogers@firstpresbyterian.org.

FAITH FORMATION

Men's Study Group

1st and 3rd Friday | 8:30 a.m. | Curtis Room & ZOOM

The Men's Study Group are studying *Elusive Grace: Loving Your Enemies While Striving for God's Justice*, by the Rev. Dr. Scott Black Johnston. All men are invited to join us for coffee, study, and conversation. Books are available for purchase (\$20) in the church office. For more information contact Jay Sanderford at jsanderford@firstpresbyterian.org.

Presbyterian Women

May 14 | 10:30 a.m. | Social Hall

Come to Coffee Hour on May 14 and celebrate Mother's Day with Presbyterian Women! Enjoy cake, cookies and coffee and while you're munching, visit the information table and learn how much PW has to offer. Questions? Contact Meg Brown at lmegbrown@gmail.com.

Honoring Graduates

Graduation time is here! If you or your family member will be graduating this spring, please let us know so that we may honor our grads in the June 11 bulletin and on our social media pages. Complete the online form, firstpresbyterian.org.

MUSIC & FINE ARTS

Art Exhibit: The Cartography of Loss

An exhibit by local artist Leslie Sobel is now on view in the Social Hall. Leslie's art addresses water and climate change, including pollution, flooding, and environmental damage to our continental watersheds and the increase in harmful algae blooms in Lake Erie and other bodies of water.

MISSION

Habitat for Humanity Build

Saturday, May 13 | 9:00 a.m. | Ypsilanti

Join us in building a Habitat for Humanity house in Ypsilanti this spring! First Presbyterian and the House of Faith partner churches are looking for volunteers on May 13 and June 10 from 9 a.m. to 3 p.m. Sign up online at firstpresbyterian.org/events.

Meal Volunteers

Tuesdays | St. Luke's Lutheran Church

Circles Program seeks volunteers for Tuesday night meals at St. Luke's Lutheran Church. Groups of 5-6 volunteers are needed to provide and serve dinner for 40 people. Contact Martha Kershaw at mdkershaw@sbcglobal.net to get involved. Sponsored by Friends In Deed, the program helps families rise out of poverty through education, skills building, and relationships.

Communion Sunday Food Drive

Sunday, May 7

Hunger issues continue to grow in Washtenaw County. Next Sunday bring non-perishable food items for our Communion Sunday Food Drive, which benefits The Food Gatherers. Food donated to Food Gathers goes directly to feed hungry people and supply smaller food pantries in our communities.

Ann Arbor Climate Teach-in

Sunday, May 7 | 1:30 p.m. | Genesis Ann Arbor

On May 7, faith communities from around Ann Arbor will come together for a climate teach-in from 1:30-5 p.m. at Genesis Ann Arbor (2309 Packard St.). Come learn about how you can make a difference in issues of environmental justice along with other people of faith. Learn more and register at a2climateteachin.com. Contact Hannah Lundberg with questions or to join the FPC climate justice workgroup.

WORSHIP

Taize Wholeness & Healing Service

Tuesday, May 2 | 7:00 p.m. | Monteith Hall

This month's Taizé service will be centered around wholeness and healing and is comprised of silence and song, candlelight and stillness, prayer and contemplation.